



# CMSI-8H8CVE

HDBaseT™ 8×8 HDMI Matrix over CAT5e/6/7  
with LAN Serving



Operation Manual



## **DISCLAIMERS**

The information in this manual has been carefully checked and is believed to be accurate. Cypress Technology assumes no responsibility for any infringements of patents or other rights of third parties which may result from its use.

Cypress Technology assumes no responsibility for any inaccuracies that may be contained in this document. Cypress also makes no commitment to update or to keep current the information contained in this document.

Cypress Technology reserves the right to make improvements to this document and/or product at any time and without notice.

## **COPYRIGHT NOTICE**

No part of this document may be reproduced, transmitted, transcribed, stored in a retrieval system, or any of its part translated into any language or computer file, in any form or by any means—electronic, mechanical, magnetic, optical, chemical, manual, or otherwise—without express written permission and consent from Cypress Technology.

© Copyright 2011 by Cypress Technology.

All Rights Reserved.

Version 1.1 August 2011

## **TRADEMARK ACKNOWLEDGMENTS**

All products or service names mentioned in this document may be trademarks of the companies with which they are associated.





## SAFETY PRECAUTIONS

Please read all instructions before attempting to unpack, install or operate this equipment and before connecting the power supply.

Please keep the following in mind as you unpack and install this equipment:

- Always follow basic safety precautions to reduce the risk of fire, electrical shock and injury to persons.
- To prevent fire or shock hazard, do not expose the unit to rain, moisture or install this product near water.
- Never spill liquid of any kind on or into this product.
- Never push an object of any kind into this product through any openings or empty slots in the unit, as you may damage parts inside the unit.
- Do not attach the power supply cabling to building surfaces.
- Use only the supplied power supply unit (PSU). Do not use the PSU if it is damaged.
- Do not allow anything to rest on the power cabling or allow any weight to be placed upon it or any person walk on it.
- To protect the unit from overheating, do not block any vents or openings in the unit housing that provide ventilation and allow for sufficient space for air to circulate around the unit.

## REVISION HISTORY

VERSION NO.	DATE DD/MM/YY	SUMMARY OF CHANGE
VR0	11/06/11	Preliminary Release
VS1	11/07/13	Updated text



# CONTENTS

<b>1. Introduction</b> .....	1
<b>2. Applications</b> .....	1
<b>3. Package Contents</b> .....	1
<b>4. System Requirements</b> .....	2
<b>5. Features</b> .....	2
<b>6. Operation Controls and Functions</b> .....	3
6.1 Front Panel.....	3
6.2 Rear Panel .....	4
6.3 Side Panel .....	5
6.4 Remote Control.....	6
6.5 IR Cable Pin Assignment .....	6
6.6 RS-232 Protocols .....	7
6.7 RS-232 and Telnet Commands .....	8
6.8 Telnet Control .....	9
6.9 Web GUI Control.....	11
<b>7. Connection Diagram</b> .....	13
<b>8. Specifications</b> .....	15
<b>9. Acronyms</b> .....	16





## 1. INTRODUCTION

The HDBase™ 8 by 8 HDMI Matrix over CAT5e/6/7 supports the transmission of video (resolutions up to 1080p Full HD and 1920x1200@60Hz), multi-channel digital audio and control via IR, RS-232 or Telnet and Web GUI from eight high definition sources to eight outputs over a single CAT5e/6/7 cable (up to 100m) for each output. It supports high resolution digital audio formats such as LPCM 7.1CH, Dolby TrueHD, Dolby Digital Plus and DTS-HD Master Audio as well as 3D content that can be displayed when connecting a 3DTV and 3D source. Power over Ethernet (PoE) support means that compatible receivers do not need their own power supplies allowing for greater flexibility in installations and LAN serving allows devices such as Smart TVs to be connected to the network.

## 2. APPLICATIONS

- Domestic HDMI Matrix System
- Video/TV wall display and control
- Security surveillance and control
- Commercial advertising, display and control
- University lecture hall, display and control
- Retail sales and demonstration

## 3. PACKAGE CONTENTS

- 1×HDBase™ 8 by 8 HDMI Matrix over CAT5e/6/7
- 2×IR Extender Cable
- 2×IR Blaster Cable
- 1×IR Remote Control
- 2×24V/6.25A DC Power Adaptor (1 for PoE)
- 1×Power Cable
- Operation Manual

## 4. SYSTEM REQUIREMENTS

- HDMI equipped source devices, connect with HDMI cables or DVI equipped source, connect with DVI to HDMI cables
- HDMI equipped displays (TVs or monitors) or HDMI equipped AV receivers, connect with HDMI cables
- Industry standard CAT5e/6/7 cables
- HDBaseT™ Receivers (i.e. CH-506RX, CH-507RX or CH-1109RX)
- Network Router with internet connection for LAN serving

## 5. FEATURES

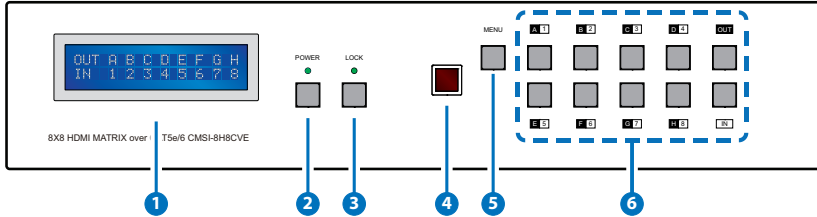
- HDMI, HDCP 1.1 and DVI compliant
- Supports HDMI 3D features
- Supports resolutions VGA~WUXGA and 480i~1080p dependent upon the output display's EDID settings
- Supports distances up to 100 meters through CAT6/7 cables
- Supports 3D signal display dependent upon the output display EDID settings
- Supports PoE (Power over Ethernet) on compatible receivers only
- Supports HDMI input up to 15 meters at 8-bit resolution or 10 meters at 12-bit resolution
- Supports bi-directional IR from input and output locations
- Supports RS-232, remote control, on-panel control and IP Control
- Supports LAN serving function through the LAN port
- 2U size design
- Supports external and internal EDID settings
- Supports LPCM 7.1CH, Dolby TrueHD, Dolby Digital Plus and DTS-HD Master Audio transmission

### Note:

1. *The PoE function is designed for powering compatible receiver units only—non-PoE receivers will need their own power supply. Receivers of another brand may not be compatible.*
2. *Do not connect the LAN port to CAT outputs of this device or to CAT inputs or receiver. Doing so may damage the unit.*

## 6. OPERATION CONTROLS AND FUNCTIONS

### 6.1 Front Panel



- 1 LCM :** Displays the setting information of each input and output setting.
- 2 POWER:** Press this button to power the device on/off. The LED will illuminate green when the power is on, red when it is in 'Standby' mode.
- 3 LOCK:** Press this button to lock all the buttons on the panel; press again to unlock. The LED will illuminate green when locked.
- 4 IR Window:** IR Receiver window (accepts the remote control signal of this device only).
- 5 MENU:** Press this button to access the LCM menu system, from here EDID settings can be managed and IP system settings are displayed.
- 6 IN/OUT and 1~8/A~H:** Press the OUT button and then the number buttons to select the required output ports, and press IN button and then a single number button to select the required input source, finally press the MENU button to confirm the selection.

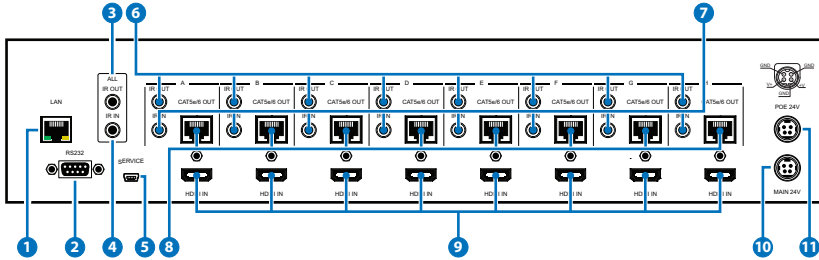
For example, if outputs A~D need to be set to input 1 and outputs E~H need to be set to input 2, then the following sequence of button presses need to be performed:

Press: OUT→A→B→C→D→IN→1→MENU,  
and then press: OUT→E→F→G→H→IN→2→MENU.

*Note: If the menu button is not pressed the selection will not be changed.*



## 6.2 Rear Panel



- 1 LAN:** Connect to an active network for LAN serving and Telnet and Web GUI control (refer to Sections 6.8 and 6.9).

When the Matrix or any compatible LAN equipped receivers are connected to a network, this allows the network access (including internet access if available) to be shared between the Matrix and all connected receivers. Connect any Ethernet equipped device e.g. a Smart TV or games console to the LAN port of a receiver for that device to share the network/internet access.

**Warning:** Please do not connect this port directly to the PC/Laptop as the Telnet function will not work.

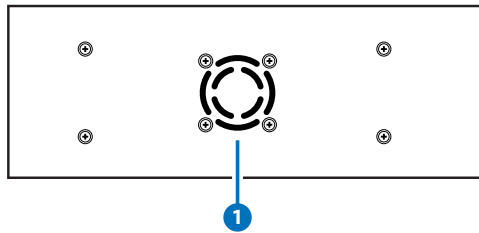
- 2 RS-232:** Connect to a PC or control system with D-Sub 9-pin cable for the transmission of RS-232 commands.
- 3 ALL IR OUT:** Connect an IR blaster to this IR output. Place the IR blaster in direct line-of-sight of the equipment to be controlled. It will transmit all IR signals received from IR IN 1~8.
- 4 ALL IR IN:** Connect an IR Receiver to this IR input. Ensure that remote being used is within the direct line-of-sight of the IR receiver. It will transmit all IR signals received from IR IN 1-8 and IR IN ALL to IR OUT 1-8 and IR OUT ALL.
- 5 SERVICE:** Manufacturer use only.
- 6 IR OUT 1~8:** Connect the IR blasters to the IR outputs. Place the IR blaster in direct line-of-sight of the equipment to be controlled. It will transmit the signal as selected in the settings.
- 7 IR IN 1~8:** Connect the IR receivers to the IR inputs. Ensure that the remote being used is within the direct line-of-sight of the IR receiver. It will transmit the IR signal to the selected IR OUT output (from 1~8) and IR OUT ALL.

- 8 **CAT5e/6/7 OUT A~H:** Connect these CAT outputs to the CAT input port of the receiver units with a single CAT5e/6/7 cable for HDMI Audio/Video and IR control signal transmission.

**Warning:** Please do not connect the CAT5e/6/7 output into the receiver's LAN port.

- 9 **HDMI IN 1~8:** Connect to the HDMI input source devices such as a DVD player or a Set-top Box with HDMI cable or DVI to HDMI cable.
- 10 **DC 24V MAIN POWER:** Connect the 24V DC power supply to the unit and plug the adaptor into an AC outlet.
- 11 **PoE 24V:** Connect the 24V PoE power supply to the unit and plug the adaptor to an AC outlet. This unit will power PoE (Power over Ethernet) capable receiver units.

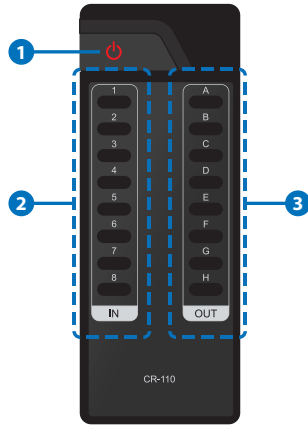
### 6.3 Side Panel



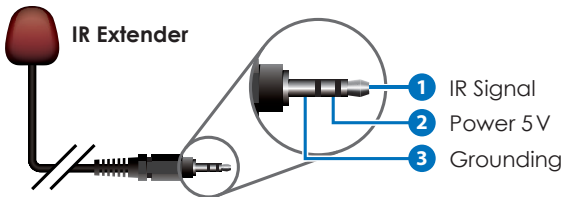
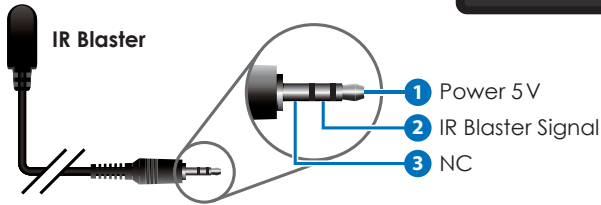
- 1 **Fan Ventilator:** These are air ventilation areas, DO NOT block these areas or cover it with any object. Please allow adequate space around the unit for air circulation.

## 6.4 Remote Control

- 1 POWER:** Press this button to switch on the device or set it to standby mode.
- 2 1~8 IN:** Input ports selection 1~8.
- 3 A~H OUT:** Output ports selection A~H.  
*Note: When the IR remote is used in the Output Zone the user only needs to select the desired input (1~8)*



## 6.5 IR Cable Pin Assignment



## 6.6 RS-232 Protocols

8×8 HDMI MATRIX	
PIN	Assignment
1	NC
2	Tx
3	Rx
4	NC
5	GND
6	NC
7	NC
8	NC
9	NC



REMOTE CONTROL	
PIN	Assignment
1	NC
2	Rx
3	Tx
4	NC
5	GND
6	NC
7	NC
8	NC
9	NC

Baud Rate: 19200 bps

Data bit: 8 bits

Parity: None

Stop Bit: 1

Flow Control: None

## 6.7 RS-232 and Telnet Commands

COMMAND	DESCRIPTION
<b>A1~A8</b>	Switch Output A to 1~8
<b>B1~B8</b>	Switch Output B to 1~8
<b>C1~C8</b>	Switch Output C to 1~8
<b>D1~D8</b>	Switch Output D to 1~8
<b>E1~E8</b>	Switch Output E to 1~8
<b>F1~F8</b>	Switch Output F to 1~8
<b>G1~G8</b>	Switch Output G to 1~8
<b>H1~H8</b>	Switch Output H to 1~8
<b>ABCD...1~ABCD...8</b>	Switch Output A B C D... to 1~8 at the same time
<b>SETIP &lt;IP&gt; &lt;SubNet&gt; &lt;GW&gt;</b>	Setting IP. SubNet. GateWay (Static IP)
<b>RSTIP</b>	IP Configuration - Reset To Factory Defaults <DHCP>
<b>IPCONFIG</b>	Display the current IP configuration
<b>P0</b>	Power OFF
<b>P1</b>	Power ON
<b>I1~I8</b>	Switch all the Output to 1~8
<b>ST</b>	Display the current matrix status and F/W version
<b>RS</b>	System Reset to A1, B2, C3, D4, E5, F6, G7, H8
<b>EM</b>	Set the EDID MODE (1=STD, 3=TV)
<b>?</b>	Display all the available commands
<b>Quit</b>	Exit(for telnet only)

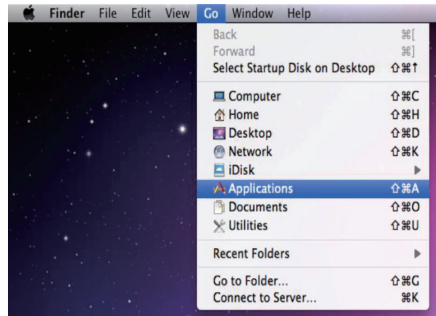
*Note: Any commands will not be executed unless followed by a carriage return. Commands are not case sensitive.*

## 6.8 Telnet Control

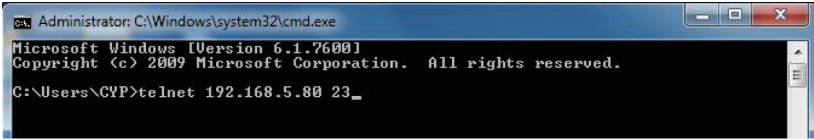
Before attempting to use the Telnet control, ensure that both the Matrix (via the LAN/Control port) and the PC/Laptop or control system being used are connected to the same active network.

To access the Telnet control in Windows 7, click on the 'Start' menu and type 'cmd' in the Search Field then press Enter (see below for reference). Under Windows XP, go to the 'Start' menu and click on 'Run', type 'cmd' then press Enter.

Under Mac OS X, go to the file menu then navigate to Go→Applications→Utilities→Terminal (see below for reference.)

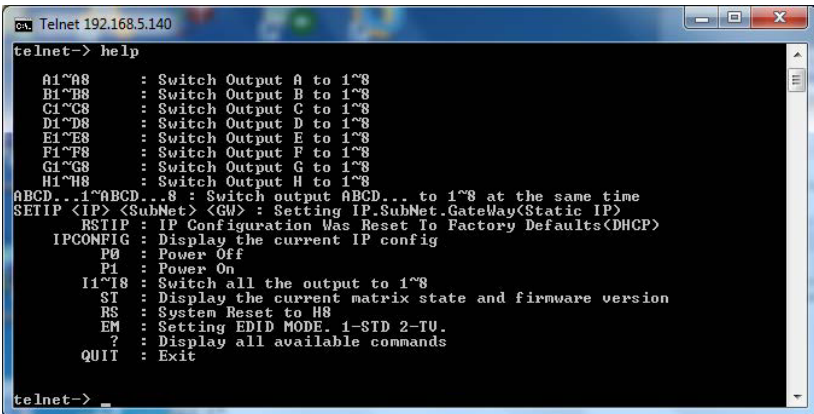


Once in the Command Line Interface (CLI) type 'telnet' along with the IP address of the unit you wish to control and '23' then hit Enter (see below for reference). This will bring us into the device which we wish to control.



*Note: The IP address of the Matrix can be displayed on the device's LCM monitor by pressing the Menu button twice.*

Type 'HELP' to list the available commands (see below for reference).



Type 'IPCONFIG' To show all IP configurations. To reset the IP, type 'RSTIP' and to use a set static IP, type 'SETIP'.

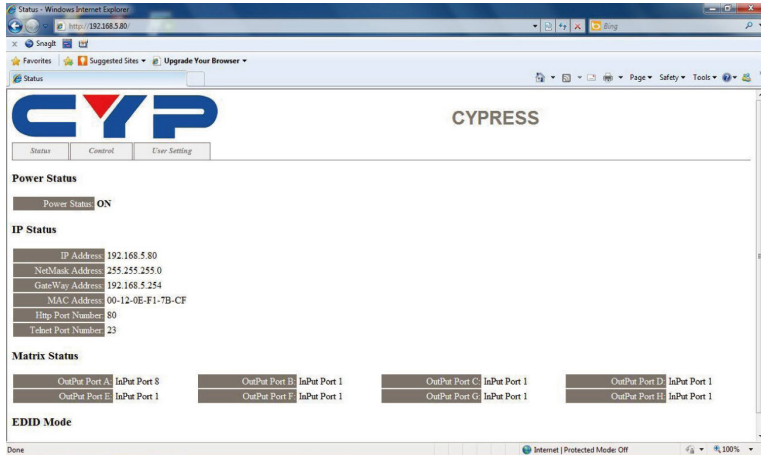
*Note:*

1. All commands will not be executed unless followed by a carriage return. Commands are case-insensitive.
2. If the IP is changed then the IP Address required for Telnet/ WebGUI access will also needs to be changed accordingly.

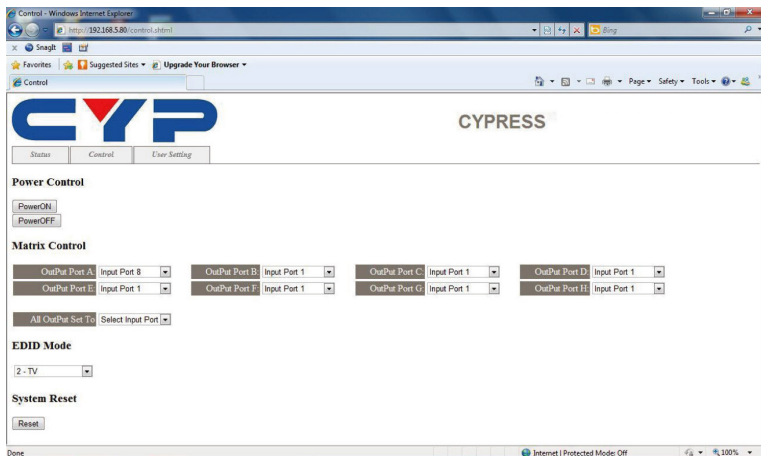


## 6.9 Web GUI Control

On a PC/Laptop or control system that is connected to the same active network as the Matrix, open a web browser and type device's IP address on the web address entry bar. The browser will display the device's status, and the control and user settings pages.

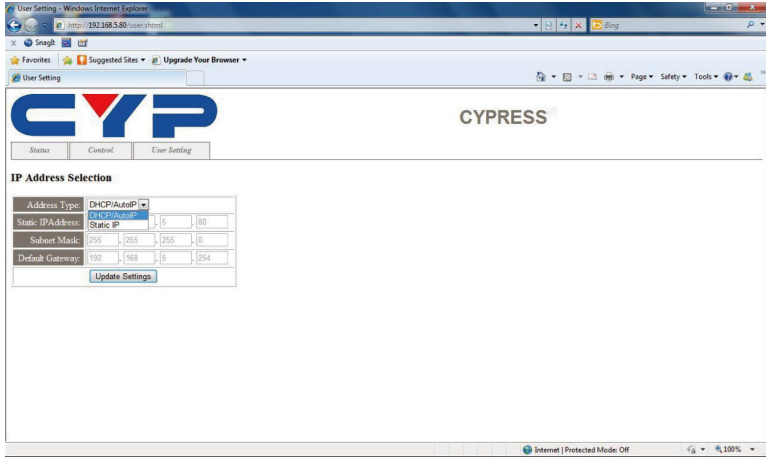


Click on the 'Control' tab to control power, input/output ports, EDID and reset mode.

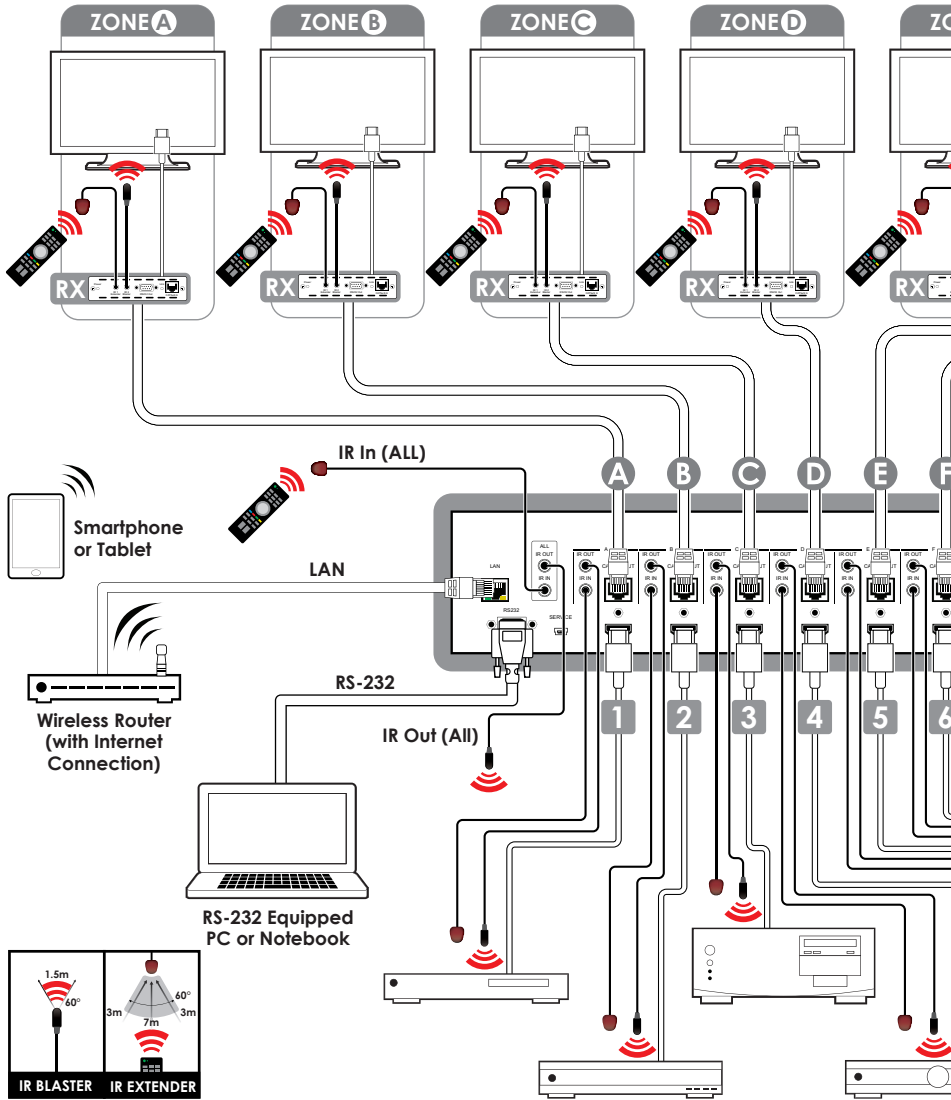


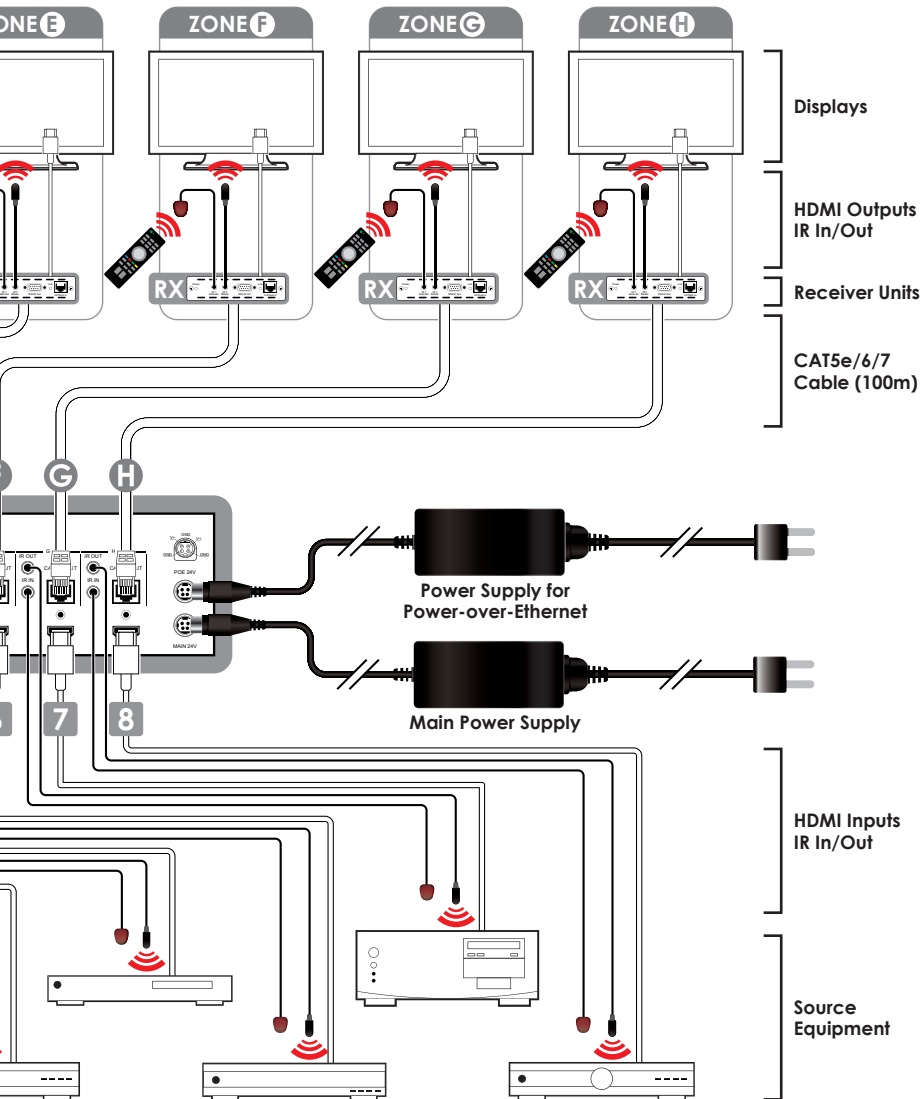


Click on the 'User Setting' tab allows you to reset the IP configuration. The system will ask for a reboot of the device every time any of the settings are changed. The IP address needed to access the Web GUI control will also need to be changed accordingly on the web address entry bar.



## 7. CONNECTION DIAGRAM







## 8. SPECIFICATIONS

<b>Video Bandwidth</b>	225 MHz/6.75 Gbps
<b>Input Ports</b>	8×HDMI, 9×IR Extender, 1×RS-232, 1xLAN, 1×Mini USB-B (Update only)
<b>Output Ports</b>	8×CAT5e/6/7, 9×IR Blaster
<b>ESD Protection</b>	Human-body Model: ± 8kV (Air-gap discharge) ± 4kV (Contact discharge)
<b>Power Supply</b>	24 V/6.25 A DC (US/EU standards, CE/FCC/UL certified)
<b>Dimensions</b>	438 mm (W)×255 mm (D)×92 mm (H)
<b>Weight</b>	4268 g
<b>Chassis Material</b>	Metal
<b>Color</b>	Black
<b>Operating Temperature</b>	0 °C~40 °C/32 °F~104 °F
<b>Storage Temperature</b>	-20 °C~60 °C/-4 °F~140 °F
<b>Relative Humidity</b>	20~90% RH (non-condensing)
<b>Power Consumption</b>	84 W/TX (Main), 52 W/RX (PoE)

## 9. ACRONYMS

ACRONYM	COMPLETE TERM
<b>CLI</b>	Command Line Interface
<b>DTS</b>	Digital Theater System
<b>DVI</b>	Digital Visual Interface
<b>EDID</b>	Extended Display Identification Data
<b>GUI</b>	Graphical User Interface
<b>HDCP</b>	High-bandwidth Digital Content Protection
<b>HDMI</b>	High-Definition Multimedia Interface
<b>HDTV</b>	High-Definition Television
<b>LCM</b>	Liquid Crystal Module
<b>USB</b>	Universal Serial Bus
<b>VGA</b>	Video Graphics Array
<b>WUXGA</b>	Widescreen Ultra Extended Graphics Array







**CYPRESS TECHNOLOGY CO., LTD**

Home page: <http://www.cypress.com.tw>

20120614 MPM-CMSI8H8CVE