

installedsound

portablesound

installedsound >

TCS-61 compact passive 2-way loudspeaker

Features

- Compact enclosure
- Double trapezoidal shape
- CEW™ waveguide
- Rotatable HF pattern
- Multiple rigging points
- Custom colour option
- IP54 weather resistance option

Applications

- Pubs, clubs and bars
- Music venues
- Delay rings
- Under balcony
- Houses of worship

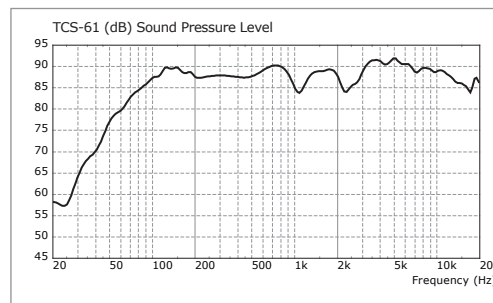


The TCS-61 is a compact passive two-way loudspeaker consisting of a 6.5" reflex-loaded low frequency driver and a 1" high frequency compression driver on a rotatable 100°H x 60°V Converging Elliptical Waveguide™ in an optimally tuned enclosure.

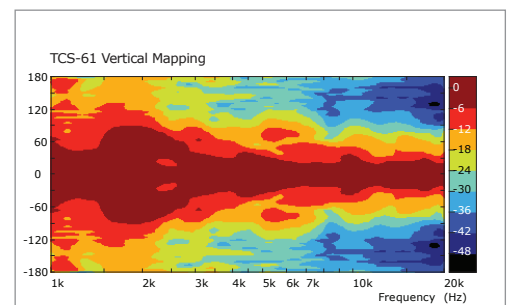
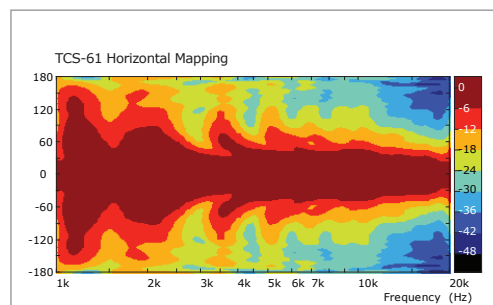
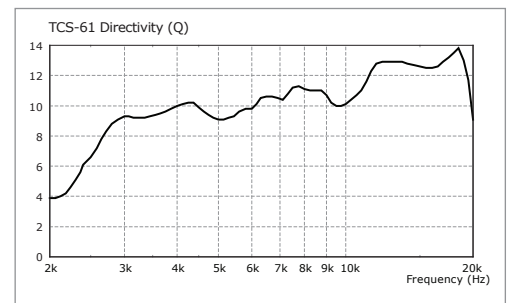
These high grade components are matched with an internal passive crossover to ensure a seamless transition between the HF and LF drivers. The cabinet is constructed from 12mm (1/2") birch plywood with a powder-coated steel mesh grille backed with reticulated foam. The double trapezoidal shape allows it to be arrayed with other TCS series cabinets. Multiple rigging points, supported by internal steel flying strips, are provided on the top, bottom, sides and rear of the cabinet to enable the TCS-61 to be suspended and angled in permanent installations using M8 shoulder eyebolts. The enclosure is also fitted with internal rigging points for use with Turbosound and OmniMount™ wall and ceiling brackets. A Speakon NL4 connector is located on the rear panel in parallel with a 4-way barrier strip providing input and loop-through connections to additional TCS series cabinets.

TCS series

Frequency Response



Directivity



TURBOSOUND Ltd
Star Road
Partridge Green
West Sussex
RH13 8RY
United Kingdom

t: +44 (0)1403 711447

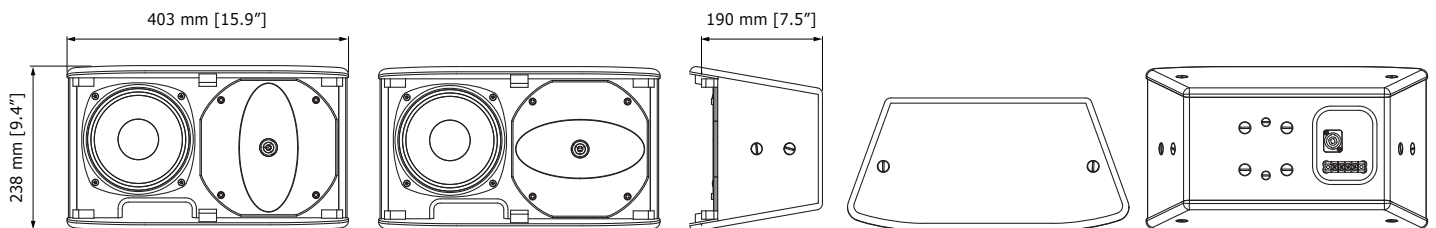
f: +44 (0)1403 710155

e: techsupport@turbosound.com

w: www.turbosound.com

TCS-61 compact passive 2-way loudspeaker

DIMENSIONS (HxWxD)	238mm x 403mm x 190mm (9.4" x 15.9" x 7.5")
NET WEIGHT	7kg (15.4lbs)
COMPONENTS	1 x 6.5" (165mm) LF driver, 1 x 1" (25mm) HF driver on a Converging Elliptical Waveguide™
FREQUENCY RESPONSE	70Hz - 20kHz ±3dB; 50Hz - 20kHz ±10dB
DISPERSION	100°H x 60°V @ -6dB points
POWER HANDLING	175 watts rms, 350 watts program
SENSITIVITY	88dB 1w @ 1 metre
MAXIMUM SPL	110dB continuous, 116dB peak
CROSSOVER	Internal fourth order passive network at 2kHz
NOMINAL IMPEDANCE	8 ohms
CONSTRUCTION	12mm (1/2") birch plywood, finished in black semi-matt textured paint
GRILLE	Powder-coated perforated steel with foam backing
CONNECTORS	(1) Speakon NL4MP, wired pin 1+: positive, pin 1-: negative, pins 2+ and 2- N/C (1) 4-way barrier strip connector
RIGGING	(8) M8 internal rigging points with internal flying strips for M10 eyebolts (4) M8 internal rigging points for WB-20 and CB-55 brackets (2) M6 internal rigging points for OmniMount™ 20.5 series brackets
OPTIONS	White and custom colours; IP54 weather resistance; Stainless steel grille; black or white weatherproof paint finish; captive cable with cable gland
SPARES AND ACCESSORIES	LS-6508 6.5" (165mm) LF loudspeaker CD-115 HF compression driver RD-115 Replacement diaphragm PX-TCS61 Passive crossover WB-20 Wall bracket CB-55 Ceiling bracket EB-10/18 M10 x 18mm eyebolt
MORE INFO	More information can be found on our website: www.turbosound.com



Limited Warranty

Every Turbosound loudspeaker product is warranted to the original end-user purchaser and all subsequent owners for a period of two (2) years for loudspeaker products, or one (1) year for electronics products, from the original date of purchase. Warranty coverage includes defects in materials and workmanship. It does not include:

- damage caused by accident, misuse, abuse, neglect or modification by any other person other than an authorised Turbosound representative,
- damage caused by overdriving, use with unsuitable amplifiers or amplifier failure,
- damage caused by failure to operate the product in accordance with the instructions contained in the user's manual,
- damage occurring during shipment in transit,
- claims based upon any misrepresentations by the seller,
- products which do not have the original components as specified in the product engineering information,
- products on which the serial number has been removed or defaced.

Should any fault develop with a component of your Turbosound system, please return the product, freight pre-paid, in its original packing carton, along with proof of purchase such as the original bill of sale, and a description of the suspected fault, to your local authorised Turbosound representative. The product serial number must be quoted in all correspondence relating to the claim. Insurance is recommended as Turbosound or its representatives are not liable for loss or damage in transit.