



CUSB-603

HDMI/COMP/SV/CV to USB FullHD Capture



Operations Manual



DISCLAIMERS

The information in this manual has been carefully checked and is believed to be accurate. Cypress Technology assumes no responsibility for any infringements of patents or other rights of third parties which may result from its use.

Cypress Technology assumes no responsibility for any inaccuracies that may be contained in this document. Cypress also makes no commitment to update or to keep current the information contained in this document.

Cypress Technology reserves the right to make improvements to this document and/or product at any time and without notice.

COPYRIGHT NOTICE

No part of this document may be reproduced, transmitted, transcribed, stored in a retrieval system, or any of its part translated into any language or computer file, in any form or by any means—electronic, mechanical, magnetic, optical, chemical, manual, or otherwise—without express written permission and consent from Cypress Technology.

© Copyright 2011 by Cypress Technology.

All Rights Reserved.

Version 1.0 August 2011

TRADEMARK ACKNOWLEDGMENTS

All products or service names mentioned in this document may be trademarks of the companies with which they are associated.

SAFETY PRECAUTIONS

Please read all instructions before attempting to unpack, install or operate this equipment and before connecting the power supply.

Please keep the following in mind as you unpack and install this equipment:

- Always follow basic safety precautions to reduce the risk of fire, electrical shock and injury to persons.
- To prevent fire or shock hazard, do not expose the unit to rain, moisture or install this product near water.
- Never spill liquid of any kind on or into this product.
- Never push an object of any kind into this product through any openings or empty slots in the unit, as you may damage parts inside the unit.
- Do not attach the power supply cabling to building surfaces.
- Use only the supplied power supply unit (PSU). Do not use the PSU if it is damaged.
- Do not allow anything to rest on the power cabling or allow any weight to be placed upon it or any person walk on it.
- To protect the unit from overheating, do not block any vents or openings in the unit housing that provide ventilation and allow for sufficient space for air to circulate around the unit.

REVISION HISTORY

VERSION NO.	DATE DD/MM/YY	SUMMARY OF CHANGE
RDV1	08/02/12	Preliminary Release



CONTENTS

1. Introduction	1
2. Applications	1
3. Package Contents	1
4. System Requirement	1
5. Features	2
6. Specifications	2
7. Operation Controls and Functions	3
7.1 Front Panel.....	3
7.2 Rear Panel.....	4
8. Installation	4
8.1 Hardware Installation.....	4
8.2 Software Installation.....	7
9. DVR panel's functions	11
10. Connection Diagram	13
11. Acronyms	14

1. INTRODUCTION

CUSB-603 is High Definition capture box supports HDMI 1080p video/ component/SV/CV input and record to H.264 video format. Its low power consumption and superior video processing capabilities make it ideal for integration into high-end portable and desk top PC products.

2. APPLICATIONS

- Displaying HD signal on PC or NB's monitor

3. PACKAGE CONTENTS

- HDMI/COMP/SV/CV to USB Capture Box
- Driver CD Disc
- COMP/SV/CV converter cable
- Operation Manual

4. SYSTEM REQUIREMENT

In order to run the application smoothly, please refer to the following hardware recommendation.

- System Hardware Requirements:
2.4 GHz single core CPU with at least 1GB RAM for optimal performance
- Operating Systems:
Windows 2K SP4
Windows XP Home or Professional 32 bits SP2
Windows Vista 32 bits
Windows 7 32 bits
- USB Port Extension:
An available USB 2.0 port with USB to mini USB cable



5. FEATURES

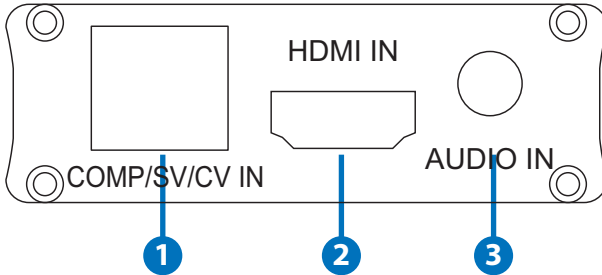
- FullHD capture HDMI/COMP/SV/CV to USB
- H.264/MPEG4-AVC High Definition encoder
- Video input supports: 1920 x 1080i/p, 1280 x 720p, 576i/p, 720 x 480i/p
- Supports MPEG-4 Advanced Audio Coding (AAC)
- 48 KHz audio sampling frequencies
- It use USB bus power for low power consumption

6. SPECIFICATIONS

Input port	1 x HDMI
Output port	1 x USB
Power Supply	5V/500mA DC USB bus power
Dimensions	121 mm (W) × 21.6 mm (D) × 65.5 mm (H)
Weight	146 g
Chassis Material	Aluminum
Silkscreen Colour	Black
Power Consumption	2.5 W
Operating Temperature	0 °C~40 °C / 32 °F~104 °F
Storage Temperature	-20 °C~60 °C / -4 °F~140 °F
Relative Humidity	20~90 % RH (non-condensing)

7. OPERATION CONTROLS AND FUNCTIONS

7.1 Front Panel



1 COMP/SV/CV IN

This slot is to connect with Composite video/S-Video/Component video input source equipment such as Set-Top-Box or DVD with 8 pins cable.

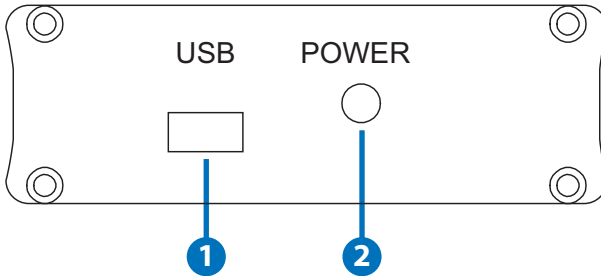
2 HDMI IN

This slot is where you plug your input source equipment with HDMI cable for input signal sending.

3 AUDIO IN

This slot is to connect with audio input source equipment such as DVD with 3.5mm audio cable.

7.2 Rear Panel



1 USB

This slot is where you plug the mini USB cable and connect it to the PC/NB for data upstream and power.

2 Power LED

This LED will illuminate when the device is connected.

8. INSTALLATION

The following sections list the procedures to follow when installing the HDMI/COMP/SV/CV to USB Full HD Capture. Please follow the step accordingly to launch the installation successfully.

8.1 Hardware Installation

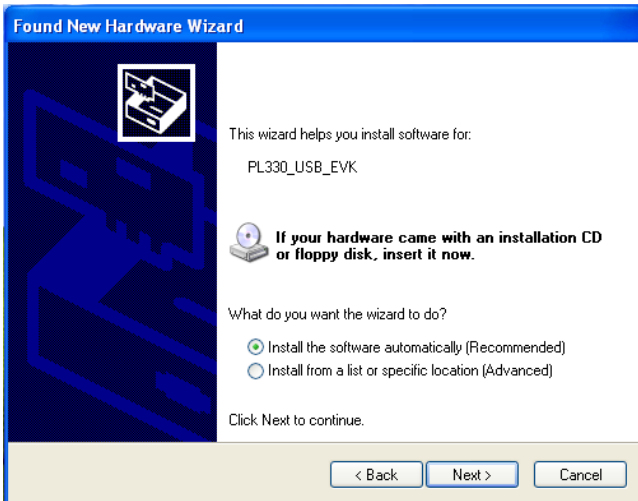
Connect the HDMI to USB Full HD Capture to NB/PC with mini USB to USB type A cable and the LED will illuminate in green with a Found New Hardware message from NB/PC desk screen.



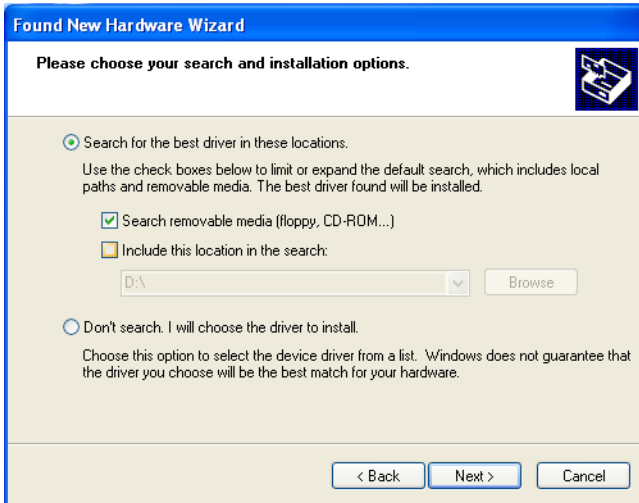
A Wizard dialogue will appear, click "Yes", and click "Next" to continue the installation.



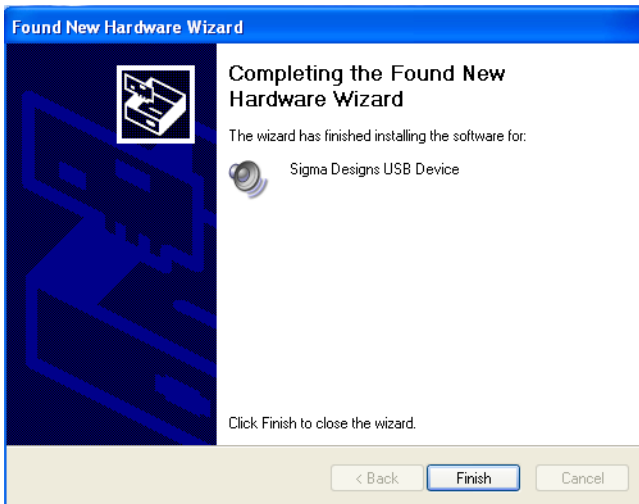
Insert the CD driver included in the package now and tick on "Install the software automatically" then click "Next".



Another dialogue will appear as below. Tick “Search” and click on “Next” to continuing the installation.



Allowing the Wizard to search and find the proper installation file for a while and click “Finish” to complete the installation.



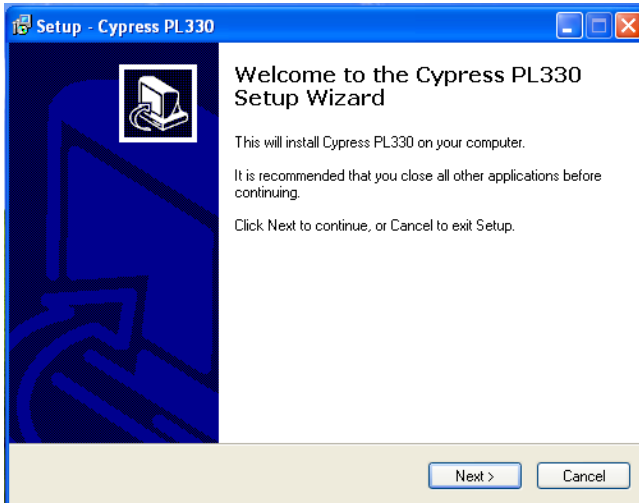
8.2 Software Installation

Download “DivXInstaller.exe” from the website: <http://www.divx.com/en/software/divx-plus> and click on the “FREE DOWNLOAD” to install it.

Run and click the “AUTORUN.EXE” in your CD root directory and click on PL 330 to install.

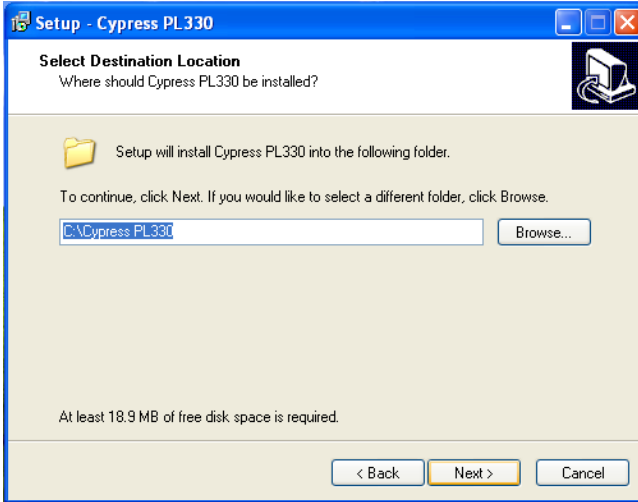


The setup dialogue of PL330 will appear, click “Next” to continue the setup.

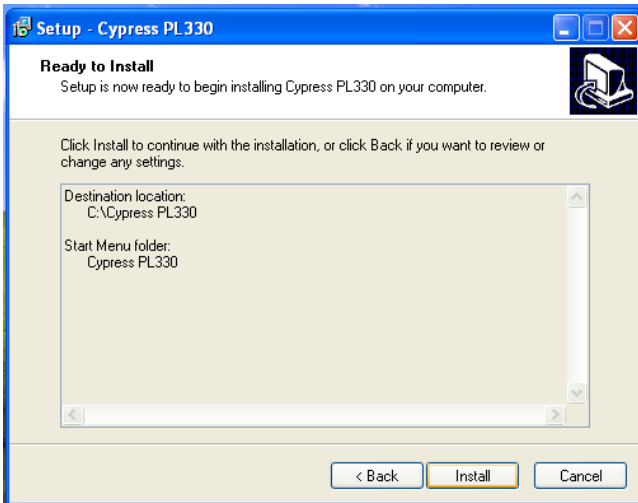




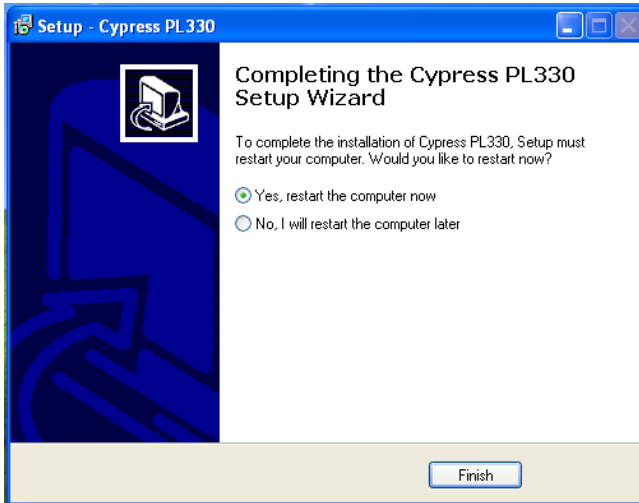
Allowing the setup to process for few moments and select a destination location for saving the PL 330's folder. Users are free to set the destination location and it is recommended to save it under the easy finding place.



Click "Install" to confirm the installation.



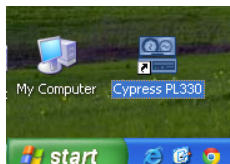
Click "Finish" again to complete the PL330's installation.



Then click on Exit to finish the installation.

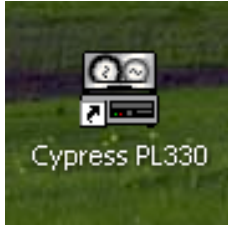


Cypress PL330's icon should appear on the desk.

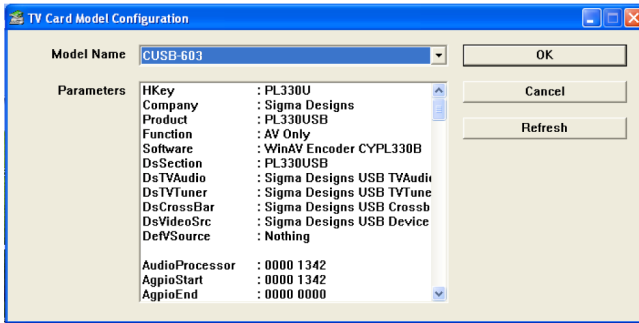




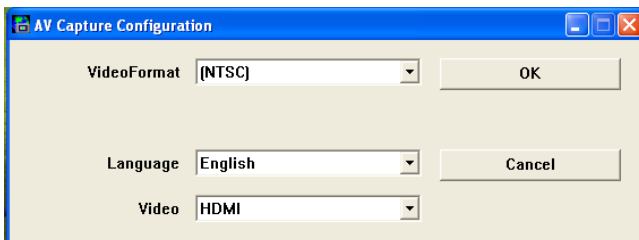
Double click on the Cypress PL330 to set the configuration of HDMI/COMP/SV/CV to USB FullHD Capture.



Select CUSB-603 and click on "OK".



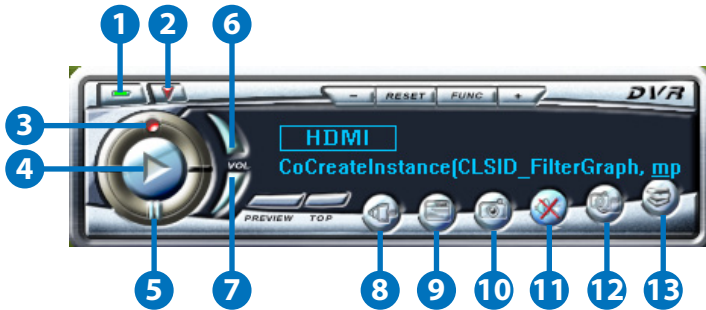
Select your AV system of NTSC or PAL, language and Video type then click on "OK".



A DVR player will appear on the screen.



9. DVR PANEL'S FUNCTIONS



- 1** **Power**
 Click this button to exit the application.
- 2** **Minimize**
 Click this button to minimize the control panel.
- 3** **Record**
 Click this button to save the video file.
- 4** **Play**
 Click this button to play the video file from the recorded file.
- 5** **Pause**
 Click this button to pause the video.
- 6** **Vol up**
 Click this button to volume up the sound.



7 Vol down

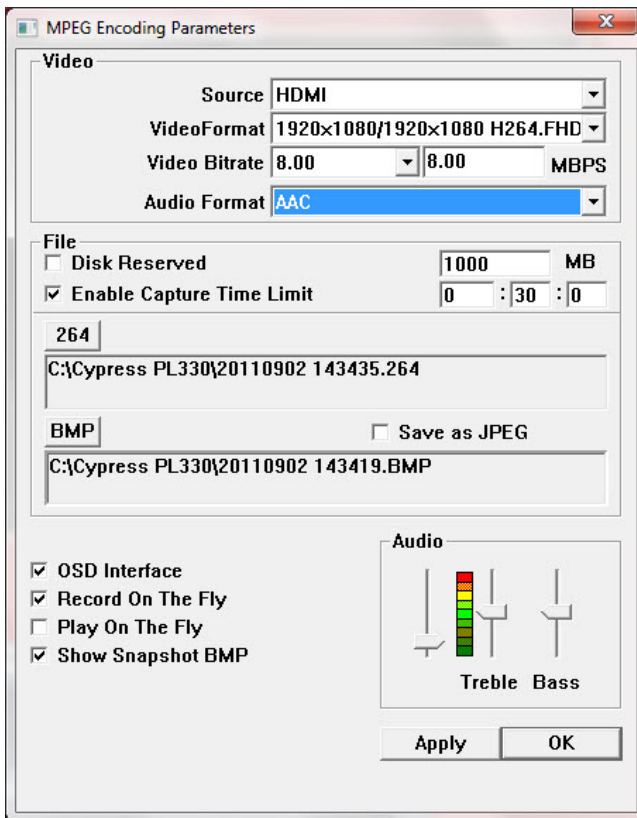
Click this button to volume down the sound.

8 Source

Click this button to select the source input from the HDMI/COMP/ CV/SV input connection.

9 Video Setup

Click this button to set the video and audio's parameter. A dialogue will appear as below, please set the parameter accordingly.



10 Save Clipboard

Click this button to copy the image for other DDE application.

11 Mute

Click this button to mute the audio.

12 Snapshot BMP

Click this button to save the still image as the BMP or JPEG file.

13 Help

Click this button to enable the online help tool.

10. CONNECTION DIAGRAM



11. ACRONYMS

ACRONYM	COMPLETE TERM
COMP	Component
CV	Composite Video
DDE	Dynamic Data Exchange
HDMI	High-Definition Multimedia Interface
USB	Universal Serial Bus



CYPRESS TECHNOLOGY CO., LTD

Home page: <http://www.cypress.com.tw>