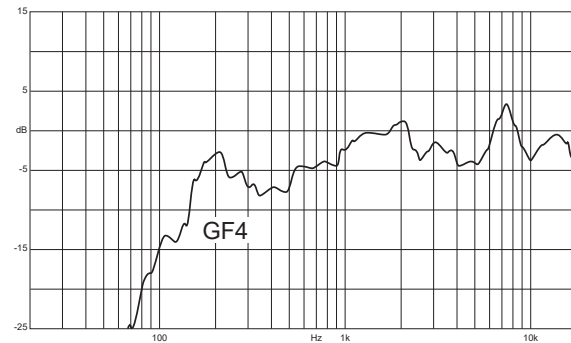


GF4 / GF4W

4" Passive Speaker for Lo-Z and 70 V / 100 V distributed lines



The GF4 is a full-range, passive two-way loudspeaker designed to be installed on a shelf or with its own bracket directly on the wall. The GF4 features 8 Ω impedance and Hi-Z taps suiting any kind of wiring configuration, such as 70 V and 100 V distributed loudspeakers lines. The resilient ABS cabinet suits outdoor/indoor applications in permanent installations for music and speech in conference rooms, hotels, bars, restaurants and retail shops



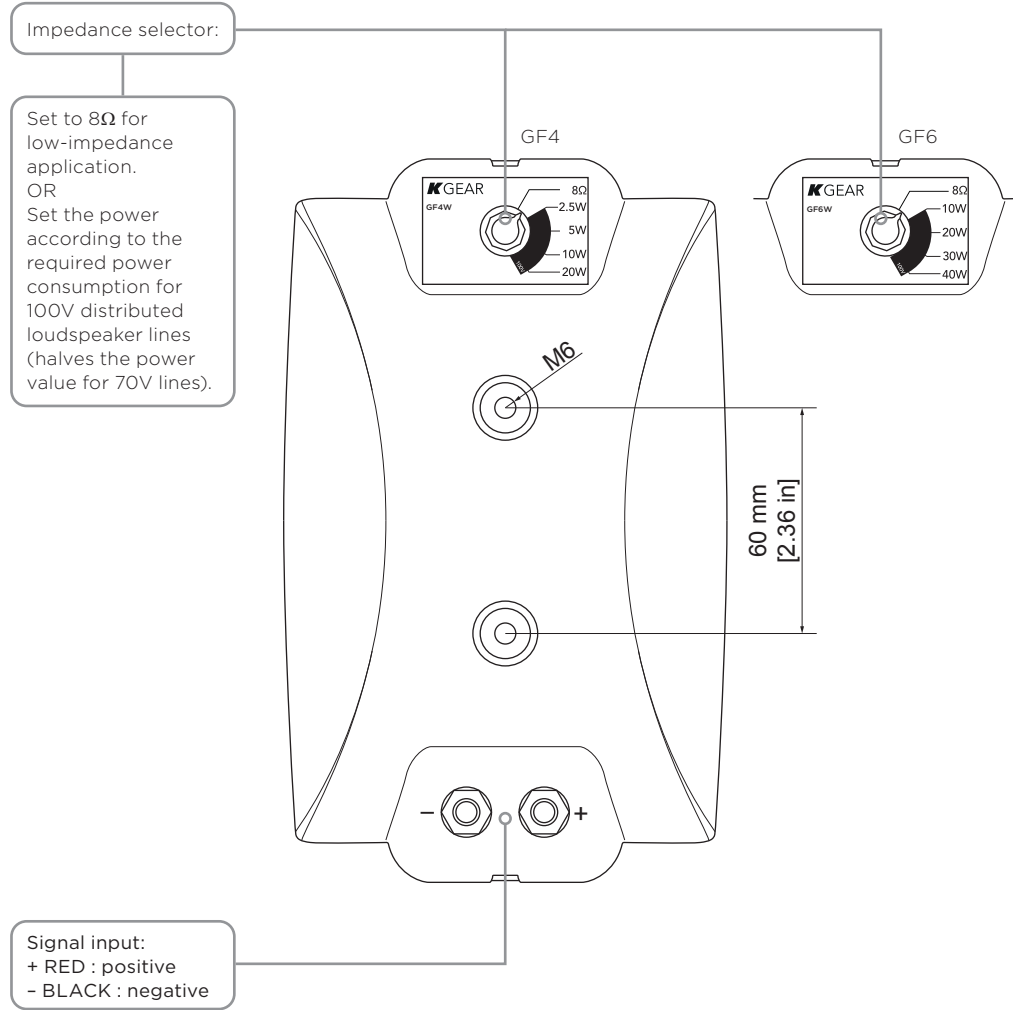
Frequent Applications	
Retail	Cafes, Bistros & Restaurants
Hotels & Resorts	Fitness & Wellness
Museum	Transportation Facilities

Suggested amplifiers	
GA201	up to 4 pcs/ch @ 8Ω
GA43 / GA43L	8Ω / 70V lines
GA46 / GA46L	8Ω / 70V / 100V lines

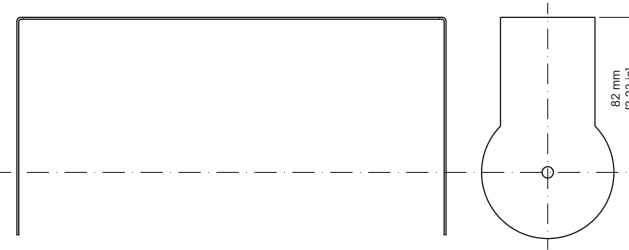
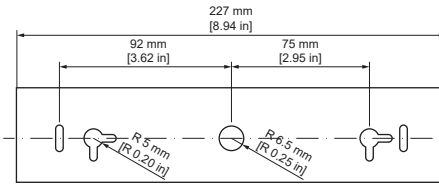
General			
Type	Passive loudspeaker		
Transducers	4" ferrite magnet woofer 1" tweeter		
Frequency Response	110 Hz - 20 kHz (-10 dB)		
Max SPL ¹	108 dB (peak)		
Power Handling	8 Ω	70 V	100 V
	20 W	1 W	2,5 W
		2,5 W	5 W
		5 W	10 W
	10 W	20 W	
Nominal Impedance	selectable: 8 Ω / Hi-Z @ 70V, 100V		
Coverage	V. 90° H. 90°		
Dimensions (WxHxD)	150x244x150 mm (5.9x9.6x5.9 in)		
Weight	1.8 kg (3.97 lb)		
Material	ABS		
IP rating	IP54		
Color	Black (GF4) White (GF4W)		

¹ Maximum SPL is calculated using a signal with crest factor 4 (12dB) measured at 1 m.

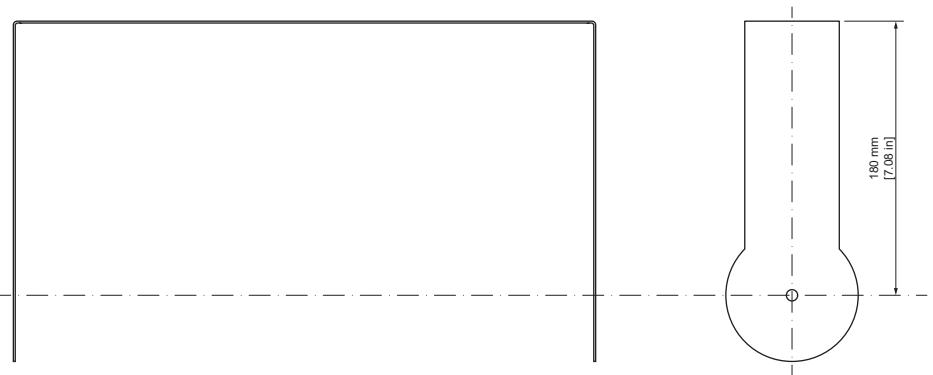
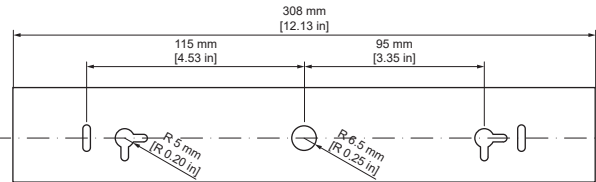
Rear panel



GF4 / GF4W bracket



GF6 / GF6W bracket



Brackets