

# Multi-screen processor

## AVCLINK VP-0808



## User manual

## CONTENTS

1. Interface introduction .....	3
2. Wiring instructions.....	4
3. Installing the client software.....	6
4. Network setting.....	6
5. Software connection .....	6
6. Device activation .....	7
7. Switching language.....	7
8. Screen output settings.....	8
9. Source display .....	8
10. Scense.....	11
11. Audio signal switching .....	12
12. Background setting.....	13
13. Changing IP address .....	13
14. User management and password modifition.....	14
15. License file import.....	15
16. Turning screens on and off.....	16
17. Modifying source name.....	16
18. Web control.....	17
19. APP control.....	18
20. Central control .....	18
21. Maintenance and troubleshooting.....	21

## 1. Interface introduction

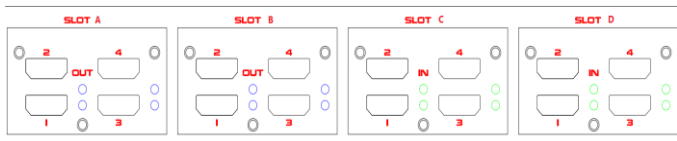


No.	Description
1	Power switch
2	IR receiver
3	RS232
4	12V Power supply
5	HDMI output (Blue light)
6	HDMI input (Green light)
7	AUDIO (3.5MM)
8	10/100M Adaptive network port
9	GND

## 2. Wiring instructions

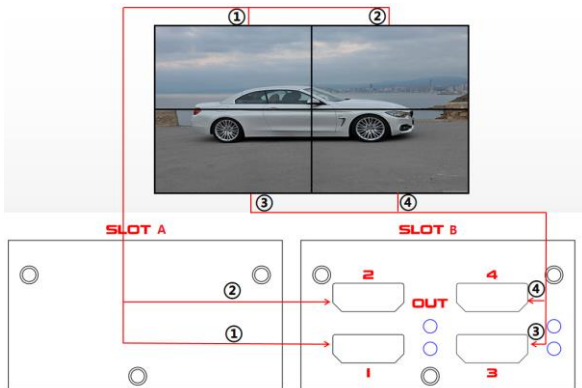
**2.1** Connect the LCD video wall cable, power supply, network cable, audio, ground cable, signal source to the DTMY video wall controller to realize audio and video output.

**2.2** Each card slot of the processor is printed with "SLOT A, SLOT B, SLOT C, SLOT D...", the card slots are arranged in alphabetical order, and each card slot is printed with "IN" and "OUT", In this way, the input (IN) and the output (OUT) can be distinguished; it can also be distinguished according to the color of the lamp post under each card slot. The green light is the input (IN) and the blue light is the output (OUT); as shown in the following figure:

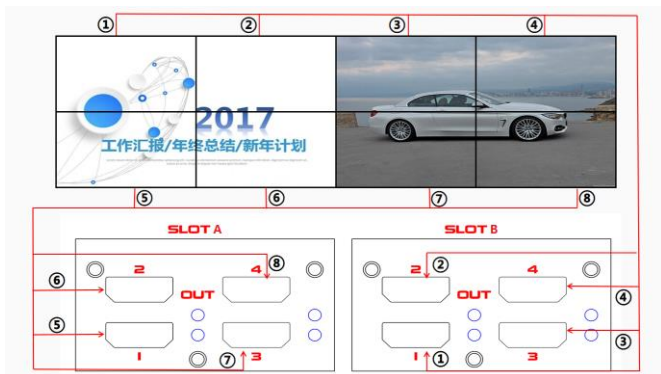


**2.3** The output line of the LCD video wall must correspond to the output port sequence of the DTMY video wall controller one to one, as shown in the figure below:

### 2x2 wiring diagram



## 4x4 wiring diagram



2.4 Connect the software (see chapter 5), after setting the screen output (see chapter 7), the wiring sequence of the output ports will appear on the virtual screen of the software, as shown in the figure below; follow the wiring sequence on the software to connect the large screen output line to the processor. The corresponding output port is sufficient.



### 3. Installing the client software

Copy the client software installation package WtyController\_VX.X.X\_setup from the U disk to the computer, and then double-click the installation package and click Next to complete the installation.

### 4. Network settings

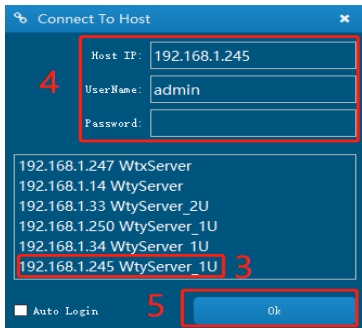
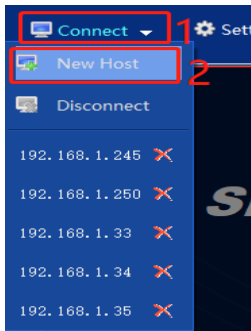
4.1 Connect the processor and the computer directly with a network cable, or connect both to the same switch or router

4.2 The factory IP address of the processor is 192.168.1.XX, and the computer IP must be set to 192.168.1.XX. The computer and the processor must be in the same network segment.

### 5. Software connection

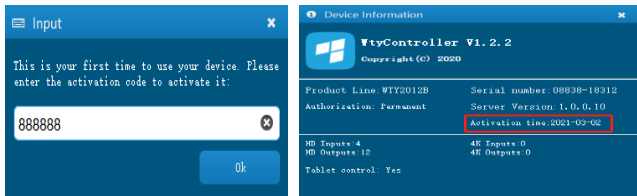
Open the software; click "Connect"; connect to the new host; a login dialog box pops up; enter the processor IP; user name (admin); password is blank.

You can also select the automatically searched processor IP (see the figure below) to log in controlling software.



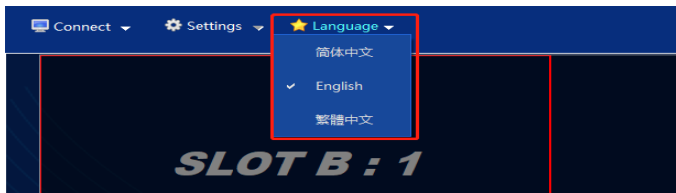
## 6. Device activation

After logging in to the software, the first time the device needs to be activated, the temporary activation code is :888888; after activation, the activation time can be viewed in the system-system information. See below:



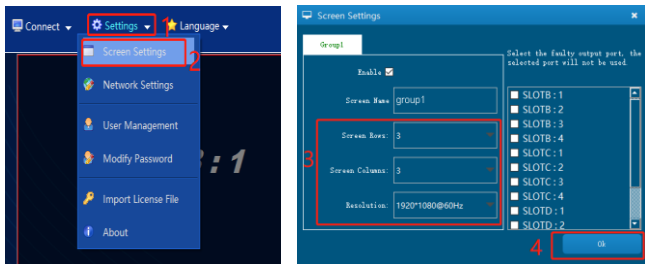
## 7. Switching language

Click "Language" to switch to English as shown below:



## 8. Screen output setting

Click “Settings” – “Screen settings”(see figure below);

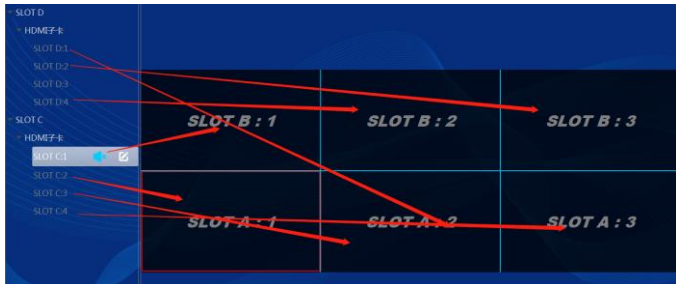


## 9. Source display

9.1 Connect the signal source to the input port of the processor through the cable, and the signal source can be automatically identified.

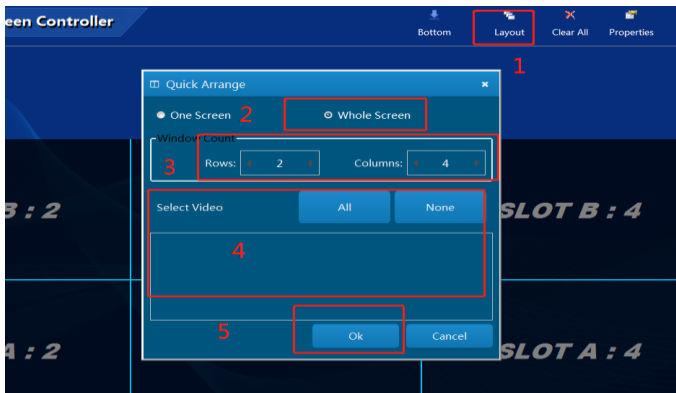
9.2 There are two ways to dray the source on the screen

9.2.1 Double-click the signal source with the mouse or drag the signal source to the specified window position, as shown below:




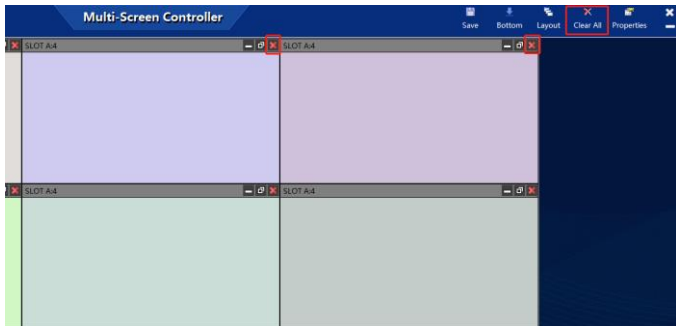


9.2.2 Click “Layout”, choose to open the window on a single screen or the whole screen, and you can complete the quick window. As shown below:

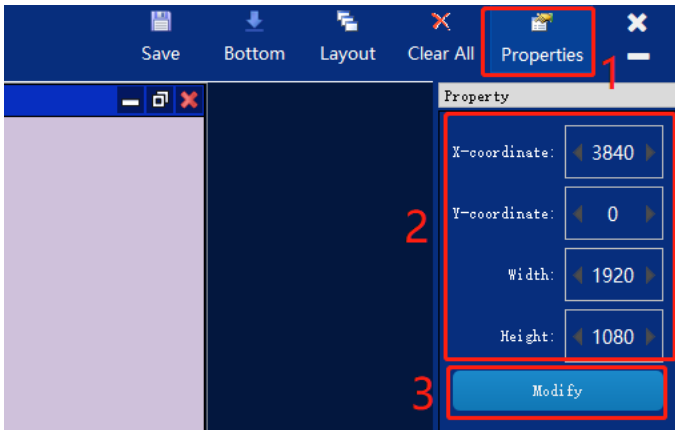


9.3 The window changes in several ways

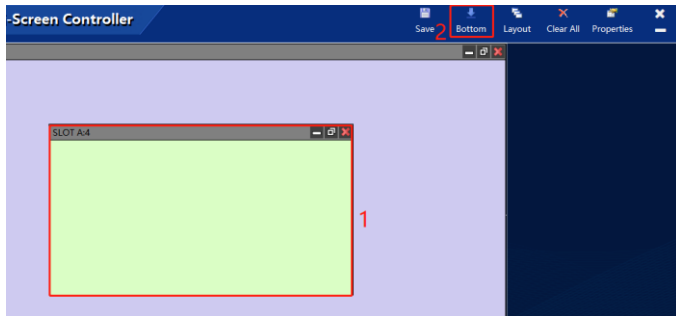
9.3.1 Click  on the right-up corner, close the current source, click “Clear All” to clear all the source of the big screen, as shown below:



9.3.2 The source position, zoom in and zoom out can be adjusted by the mouse and by changing the parameter value of the source property, as shown below:

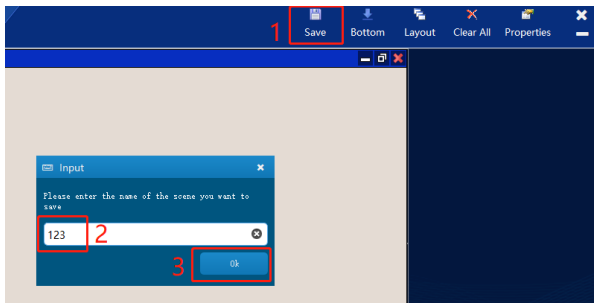


9.3.3 When the current layer is selected by the mouse, the current layer is placed on top; when the layer is clicked to bottom, the layer can be placed on the bottom. As shown below:



## 10. Scenes

**10.1** After the window is set up, click to save the scene, enter the name of the scene, and click OK to save, as shown below:

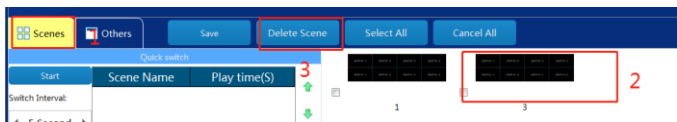


**10.2** Successfully saved scenes can be viewed in the scene list, as shown below:

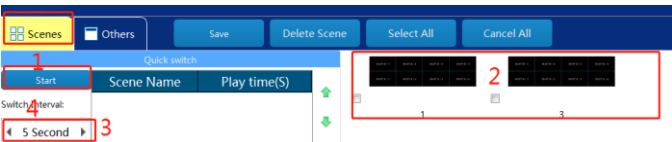


**10.3** To switch scenes double-click the name of the scene or the corresponding thumbnail.

**10.4** To delete a scene select the scene and click "Delete Scene".



**10.5** To set scene rounds, choose scene then and set the round-robin time interval.



## 11. Audio signal switching

11.1 Click the audio signal to turn on the sound of the signal, as shown in the figure below:



11.2 When audio output is not needed, click Mute to turn off all audio output, as shown in the figure below:



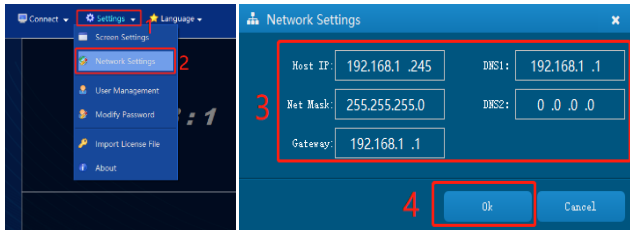
## 12. Background setting

Click "Other" to change the background image and select the desired background image on your computer.



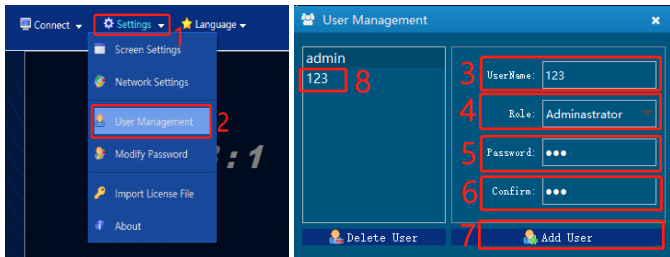
## 13. Changing IP address

Click "Settings" – "Network Settings", and modify the current IP, subnet mask, and gateway to the required values:

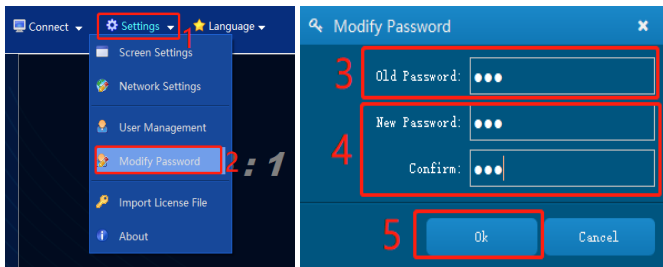


## 14. User management and password modification

14.1 Click “Settings” - “User Management”, to add a new user enter the user name and password and click “Add User”; to delete a user select the user you want to delete and click “Delete User”:

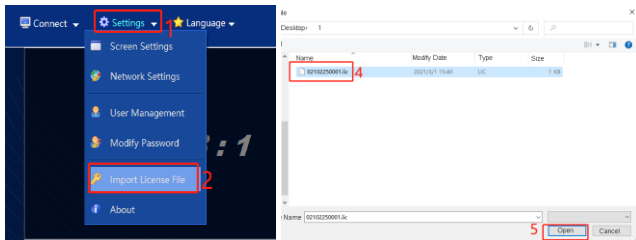


14.2 Click “Settings” - “Modify Password” to modify the current account password, as shown in the below:

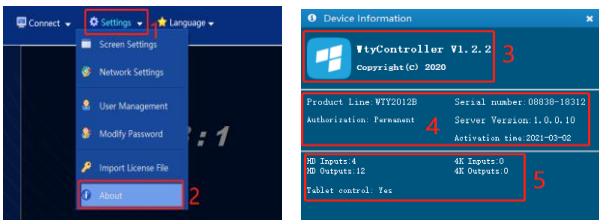


## 15. License file import

15.1 Click “Settings” - “Import license file” and select the authorization file to import:

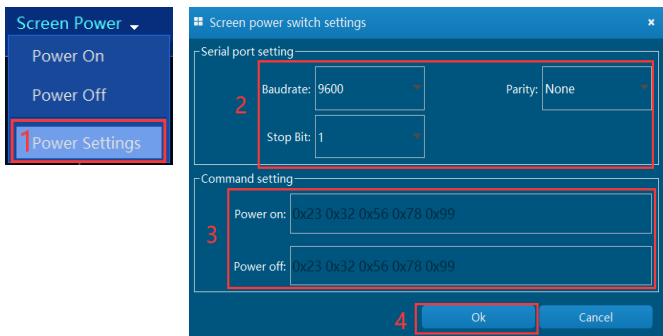


15.2 Click “Settings” - “About”, you can check whether the authorization information is correct, and check the software version, product model, serial number, etc.:



## 16. Turning screens on and off

Connect the screen and processor with serial port line, set the “Power settings”; set the serial port setting and power on and off commands; power on and off the screen by clicking “Power on” and “Power off”.



## 17. Modifying source name

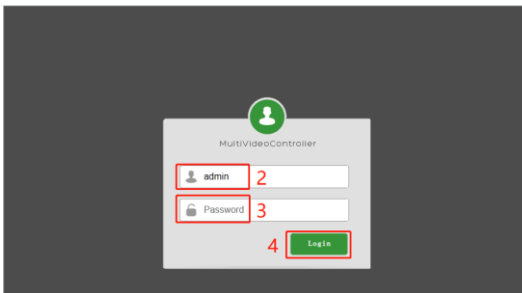
Select the name of the signal source to be modified, click to modify the signal name, and enter a new name to complete the modification of the signal source name.



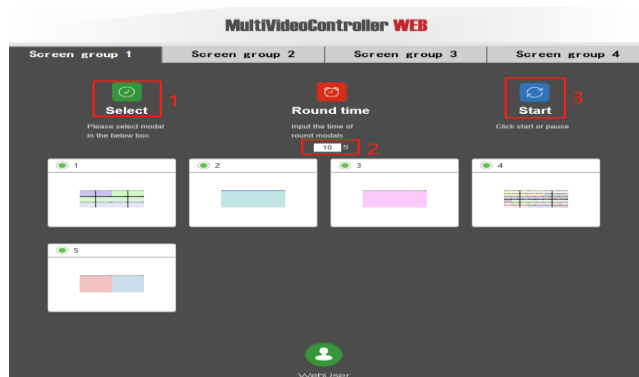
## 18. Web control

**18.1** Open the browser on your PC, enter the IP address of the processor in the address bar of the browser, and the Web login page will pop up. Enter the account password to log in. The initial account is (admin), and the password is blank; as shown below:

1 <http://192.168.1.245/>



**18.2** After logging in successfully, click the desired plan to retrieve the plan, or set the plan to automatically patrol; as shown below:



## 19. App control

**19.1** Install the app software on the tablet or mobile phone, the tablet or mobile phone must be in the same network segment as the processor; open the software, enter the processor's IP address, username (admin), and password is blank. As shown below:



## 20. Central control

### 20.1 Connect method

The system supports HTTP and serial port switching schemes

#### 20.1.1 packet format

The commands sent by the central control to the device and the responses sent by the device to the central control are all encapsulated into data packets. Each data packet starts with the \$ character and ends with the ^ character, as shown in the following figure:

Op represents an operation command, one character.

Scr represents the serial number of the screen group to be operated, one character.

\$	Op	Scr	DATA	^
----	----	-----	------	---

### 20.1.2 Serial Command

#### 1) Get the Host Preplan List

##### Central Control commands:

Op	1
Scr	One byte, values 1 to 4, specifying the serial number of the screen packet
DATA	No
Application sample:	Get Screen Packet One Preplan: <b>\$11^</b> Get Screen Packet Two preplan: <b>\$12^</b> Get Screen Packet Three preplan: <b>\$13^</b> Get Screen Packet Four preplan: <b>\$14^</b>

##### Equipment response:

Op	1
DATA	A number of plan names separated by spaces (UTF8 format). For example: Plan one, plan two

#### 2) Switching plans

##### Central Control commands:

Op	3
Scr	One byte, values 1 to 4, specifying the serial number of the screen packet
DATA	Name of plan (UTF8 format)
Application sample:	Switch screen group one "plan five": <b>\$31 plan five^</b> "ab" for Switching Screen Packet two: <b>\$32 ab^</b> "123 ab" for Switching Screen Group three: <b>\$33123 ab^</b> "plan 6a" for Switching Screen Group four: <b>\$34 plan 6a^</b> <b>Scene Name "1" Code: 24 33 31 31 5E</b> <b>Scene Name "2" Code: 24 33 31 32 5E</b> <b>Scene Name "3" Code: 24 33 31 33 5E</b>

Equipment response:

Op	3
DATA	Ok or Error

3) Gets the processor IP

Central Control commands:

Op	6
Scr	No
DATA	No
Application sample:	\$6^

Equipment response:

Op	6
DATA	Process IP。 for instance: IP:[192.168.1.250]

4) Sets the processor IP address

Central Control Order:

Op	7
Scr	No
DATA	IP address
Application sample:	Address IP set processor 192.168.1.200: \$7192.168.1.200^

Equipment response:

Op	7
DATA	Ok or Error

## 21. Maintenance and troubleshooting

---

In order to ensure the reliable use of equipment and the safety of personnel, in the installation, use, maintenance, please comply with the following:

- 1) When the equipment is installed, make sure the ground wire in the power line is well grounded.
- 2) Do not place the equipment in an overheated and undercooled place.
- 3) Maintain good ventilation in the working environment to facilitate the timely discharge of heat from the equipment to avoid excessive temperature damage to the equipment.
- 4) In wet dew environment or long-term non-use, the total power supply of the equipment should be turned off.
- 5) Be sure to unplug the AC power cord from the power outlet before removing or reinstalling any part of the equipment;
- 7) Do not disassemble the equipment without permission, so as to avoid the danger of electric shock. Do not repair privately, so as not to aggravate the degree of damage to the equipment.